

ADYN ON PARC-LENNOX

SITE PLAN



**ALL SPECIFICATIONS & FEATURES ARE SUBJECT TO CHANGE WITHOUT NOTICE AT THE BUILDERS DISCRETION

EDIT DATE:3/23/22



REZIDE PROPERTIES
THINK IT UP. BUILD IT.

213 ARNOLD MILL RD
WOODSTOCK, GA 30188

www.rezideproperties.com
(404) 483-1814

EXTERIOR

- Architecturally pleasing elevations with unique, one of a kind floor plan design
- 30 year manufactured warranted shingles with felt underlayment. Shingle type and color per architectural control guidelines
- Cement fiber siding with modern accents
- Exterior OSB sheathing
- House wrap moisture & air filtration barrier
- Garage with insulated steel garage door with 2 opener remotes, 1(min) wall plug (GFI) and 2 ceiling light. (inc. in lighting package)
- Fiberglass ¾ full light entrance door (per plan)
- Single hung, vinyl windows
- Prefinished round aluminum seamless gutters
- Two exterior water faucets and weather resistant GFI electrical outlets
- Exterior lighting package per Builder selections
- Landscaping package specifically designed per plan and kept within architectural specifications...incl irrigation

LUXURY KITCHEN

- Elegant QUARTZ countertops with WATERFALL sides on island
- Large island with sitting space (per plan)
- Standard shaker panel style with soft close doors and drawers
- Tile backsplash
- White Oak beam above range
- Frigidaire Gallery Series stainless steel electric range
- Frigidaire Gallery stainless steel dishwasher
- Designer *Tradewinds* stainless steel hoodliner
- Stainless Steel undermount kitchen sink - single bowl, 50/50 or 70/30.
- Moen Arbor, single handle pulldown chrome faucet
- High capacity air switch garbage disposal
- LED lights
- Conveniently located electrical outlets

INTERIOR

- Incredibly open interiors vaulted ceilings in the main living area and 9' ceiling in the remainder of the home
- Designer electric fireplace with white oak mantel
- Smooth finish walls & ceilings
- Painted 2-panel 8' smooth Carrara interior doors with satin nickel hardware on the main level and 6'8" smooth Carrara doors on the second floor
- All drywall surfaces painted with Sherwin Williams flat latex paint
- All wood trim painted with semi-gloss latex enamel.
- Walls and smooth ceiling painted the same color
- LVP easy maintenance flooring in all main living areas family room, dining area, kitchen, side hall, laundry room, powder room, carpet in master bedrooms, loft area, bedroom 1 and bedroom 2 incl closet and tile in guest bath floors
- Tile surround in guest bath tub surround.
- Kohler Archer Pedestal Sink in Powder Bath
- 5 1/4" speed base throughout
- Elegant granite countertops in Baths
- Energy Efficient LED lighting package incl with design center allowance
- Moen chrome plumbing fixtures in all bath
- Plastic PVC water line from meter to home
- Quick recovery electric 50 gallon water heater
- All switches are toggle
- Bath vent per plan and per code
- Dishwasher outlet and disposal switch
- Block, Brace & switch for ceiling fan option in all bedrooms
- TV coaxial cable and CAT5E (data) in family room and bedrooms

MASTER BATH

- Oversized granite bath counter with dual rectangular undermount sinks
- Large walk in shower tiled to 9' including shower shampoo shelves
- Tiled master bath floor
- Moen chrome plumbing fixtures
- Elongated toilet in private water closet
- Framed chrome shower glass

EDIT
DATE:3/23/22

**ALL SPECIFICATIONS & FEATURES ARE SUBJECT TO CHANGE WITHOUT NOTICE AT THE BUILDERS DISCRETION

OPTIONS:

Floor Plan changes:

Cased opening for barn door Z panel

Electrical Options:

Outlets (Reg & GFI)
Light receptacles
Block & Brace for fan
Block & Brace light
Switches
Drawer Outlet with Flex
Dimmer
Floor outlet
Add box for light or fan at peak of vault
GFI weatherproof outlet
Replace std outlet with 2 port USB outlet

Lighting Options:

Available in plan lighting catalog

Plumbing Options:

Kitchen: Available in showroom
Bathrooms: Available in Showroom
Toilets
Comfort Height (2 in higher than std)

Sinks:

Crockett HBS3018
Blanco Diamond Silgranit 1 ¾ BOWL
Blanco Diamond Silgranit EQUAL DOUBLE BOWL
Blanco Diamond Silgranit SUPER SINGLE BOWL
Blanco colors: ANTHRACITE, BISCOTTI, BISCUIT,
CAFE BROWN, CINDER, CONCRETE

GRAY,

METALLIC GRAY, TRUFFLE & WHITE

Garage Options:

Add door glass
Extra Remote
Exterior Keypad
Garage Floor Coating
Colors: Gray or Tan

Lockout:

Dexter Deadbolt Keypad

Trim:

Lincoln Interior Doors
1x8 Primed shiplap in dining area (vert or horiz)
1x8 Primed shiplap on Master Bed wall (vert or horiz)
One Panel Barn door

Glass:

Frameless Shower Door CHROME, BN, MATTE

BLACK

Appliances:

Electric Ranges

Frigidaire FFGEH3047VF SS
Frigidaire FFFPEH3077RF SS

Dishwashers

Frigidaire FFGID2466QF
Whirlpool WWDWT750SAHZ
Jennair JJDTSS244GL

Cabinets Options:

Westwood Shaker White
Westwood Battleship Grey
Westwood Navy
Pantry Rollouts (qty)
Trash pullout

Mirrors:

Omit in Powder Rm
Omit in Guest Bath
Omit in Master Bath

Shelving:

Omit Master Closet Shelving
Omit Bedroom 2 Closet Shelving
Omit Bedroom 3 Closet Shelving
Omit Pantry Shelving
Omit Coat Closet Shelving

Carpet: Upgrade options available in showroom

Carpet Pad:

8 lbs Leggett & Platt Ultra Magic

Paint:

Interior Walls/Ceiling:

Brite White (SW901), First Star (SW7646)
City Loft (SW7631), Agreeable Gray (SW7029)
Botany Beige (SW8913)

Interior Trim:

Brite White (SW901)

Stain Color Choice (stairs)

Forrester, Dark Walnut, Weathered Oak,
Silver Gray, Classic Gray

Stain Color Choice (kitchen beam & fireplace beam & barndoor)

Forrester, Dark Walnut, Weathered Oak,
Silver Gray, Classic Gray

Custom Paint Color for Barn Door

Tile: available options in showroom

Countertops in STD areas: available options in showroom

EDIT DATE: 2/2/22



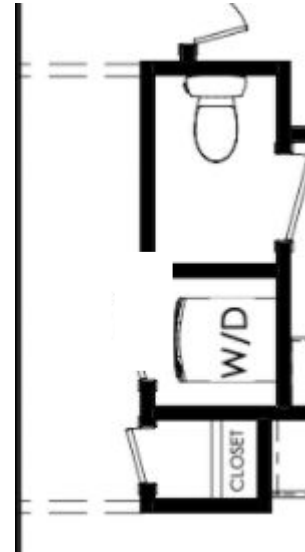
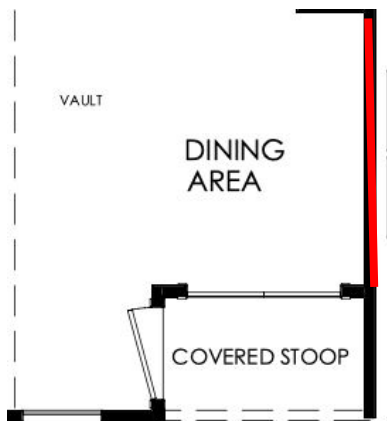
ADYN ON PARC-LENNOX



FLOOR PLAN OPTIONS

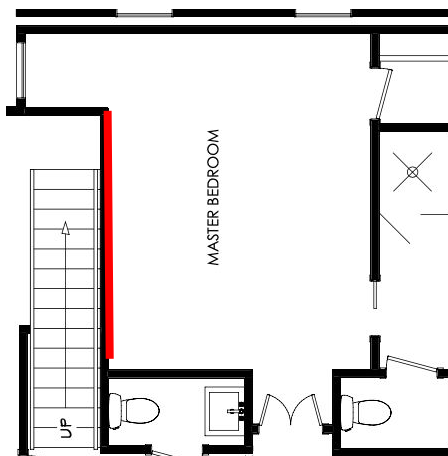
OMIT DOOR FOR FUTURE BARN DOOR

- LAUNDRY ROOM DOOR



SHIPLAP

- 1X8 SHIPLAP DINING ROOM WALL HORIZONTAL OR VERTICAL - UP TO 9FT



SHIPLAP

- 1X8 SHIPLAP MASTER BEDROOM WALL HORIZONTAL OR VERTICAL - UP TO 9FT

ADYN ON PARC-LENNOX

APPLIANCES



STANDARD



FRIGIDAIRE
FFEH3051VS
STAINLESS STEEL



FRIGIDAIRE
FFGCD2444SA
STAINLESS STEEL



30" TRADE-WIND
LINER
290 CFM:
VSL430RC
STAINLESS STEEL
W/ REMOTE

RANGE UPGRADES



FRIGIDAIRE
FFGEH3047VF
SMUDGE PROOF
STAINLESS STEEL



FRIGIDAIRE
FFFPEH3077RF
SMUDGE PROOF
STAINLESS STEEL

DISHWASHER UPGRADES



FRIGIDAIRE
FFGID2466QF
STAINLESS STEEL



WHIRLPOOL
WWDT750SAHZ
FINGERPRINT
RESISTANT
STAINLESS STEEL
W/ SS INTERIOR

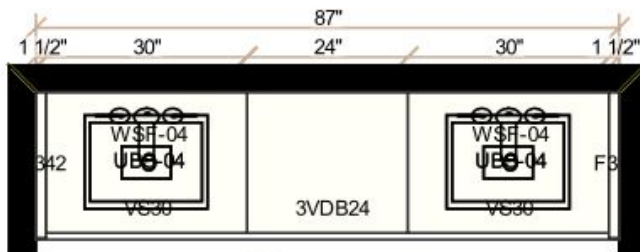
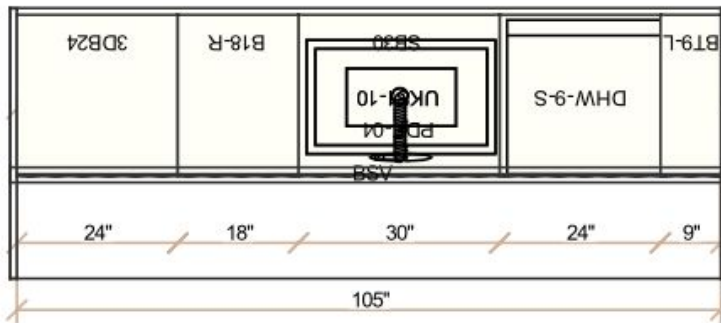
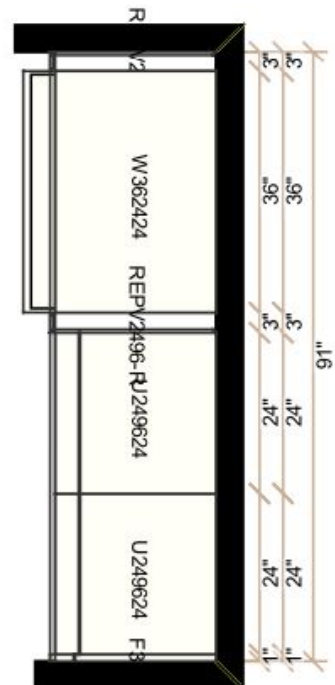
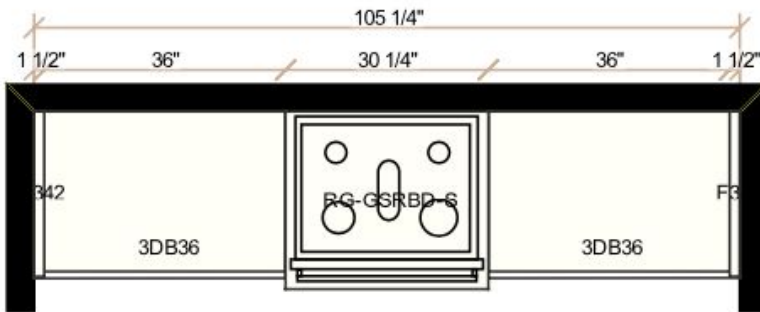


JENNAIR
JJDTSS244GP
STAINLESS STEEL

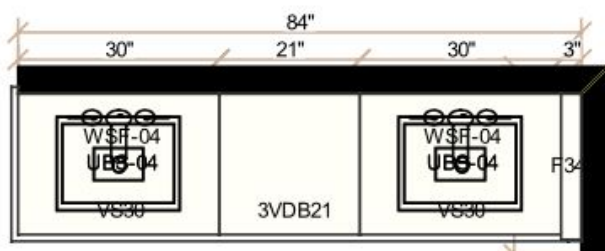
ADYN ON PARC-LENNOX



KITCHEN & BATH CABINET LAYOUT



Master



Upstairs

ADYN ON PARC-LENNOX



CABINETS & HARDWARE

INCLUDED CABINETS



INCLUDED FEATURES

- ALL WOOD BOX CONSTRUCTION
- DOVETAIL DOORS & DRAWERS
- SOFT CLOSE DOORS & DRAWERS

ACCESSORIES:

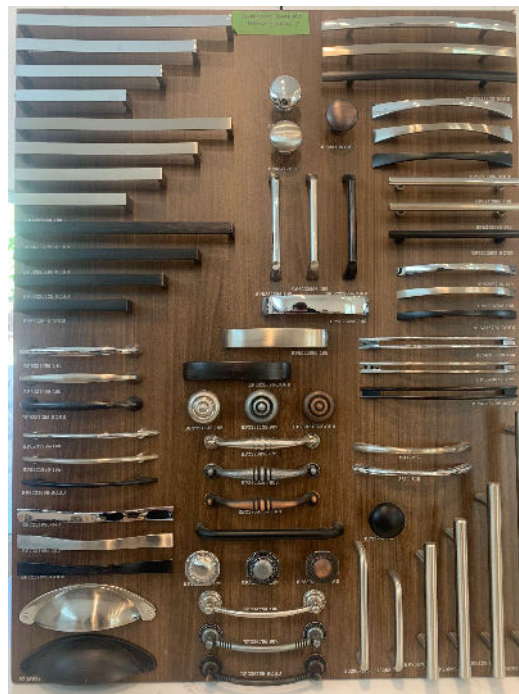
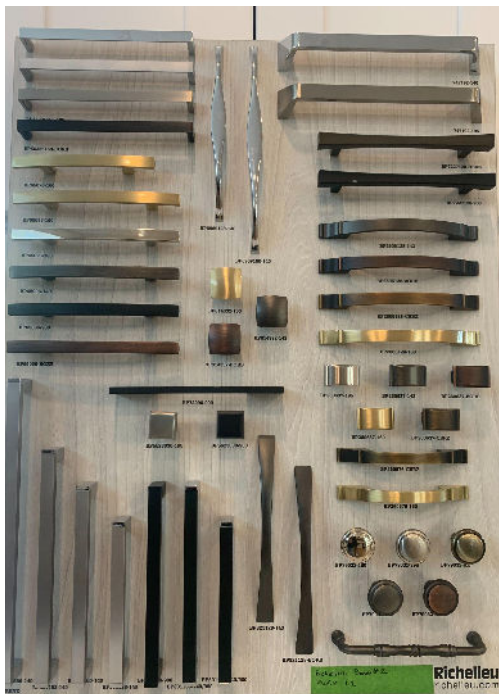
- SHOE MOLDING

AVAILABLE COLORS

- Arrowline Sapphire
- Arrowline Pebble Grey
- Arrowline Pigeon White
- Arrowline Espresso

HARDWARE

L-1 HARDWARE



ADYN ON PARC-LENNOX

CABINETS & HARDWARE



CABINET OPTIONS

DOUBLE TRASH PULLOUT



PANTRY PULLOUTS



ADYN ON PARC-LENNOX



TRIM OPTIONS

Z PANEL DOOR MODERN W/

- TRADITIONAL HARDWARE
- STAIN GRADE OPTION**
- TRIM PAINT OPTION**
- CUSTOM PAINT OPTION**



DISCLAIMER THIS IS JUST AN EXAMPLE - MODERN DOOR WILL HAVE SMOOTH PANEL IN CENTER INSTEAD OF VERTICAL SHIPLAP

ADYN ON PARC-LENNOX



EXTERIOR

INCLUDED LIGHTING

GARAGE EXTERIOR



DUSK TO DAWN ABOVE REAR GARAGE DOOR

FRONT PORCH



OVERHEAD LIGHT ON PORCH

ADYN ON PARC-LENNOX



INTERIOR

INCLUDED LIGHTING

MAIN INTERIOR LIGHTS



LIVING ROOM, KITCHEN, DINING ROOM, HALLWAY, PANTRY, GARAGE

BEDROOMS



MASTER BEDROOM, GUEST BEDROOMS



INCLUDED LIGHTING

MASTER AND GUEST BATH

CHROME FINISH - ONE OVER EACH SINK



POWDER BATH

CHROME FINISH



Progress P2009-15

ADYN ON PARC-LENNOX

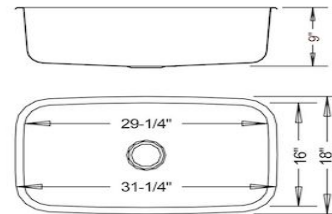


INCLUDED SINKS

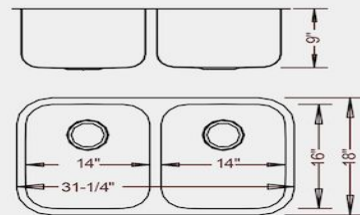
STAINLESS STEEL SINKS



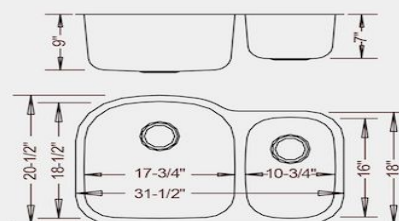
Large Single



50/50



70/30



ADYN ON PARC-LENNOX



SINKS OPTIONS

BLANCO SINKS

1 ¾ BOWL



1 ¾ LOW DIVIDE



EQUAL DOUBLE BOWL



1 ¾ LOW DIVIDE REVERSE



SUPER SINGLE BOWL



COLOR OPTIONS:

ANTHRACITE
BISCOTTI
BISCUIT
CAFE BROWN
CINDER
CONCRETE GRAY
METALLIC GRAY
TRUFFLE
WHITE



SINKS OPTIONS

Crockett SINK



HBS3018 - "Crockett"



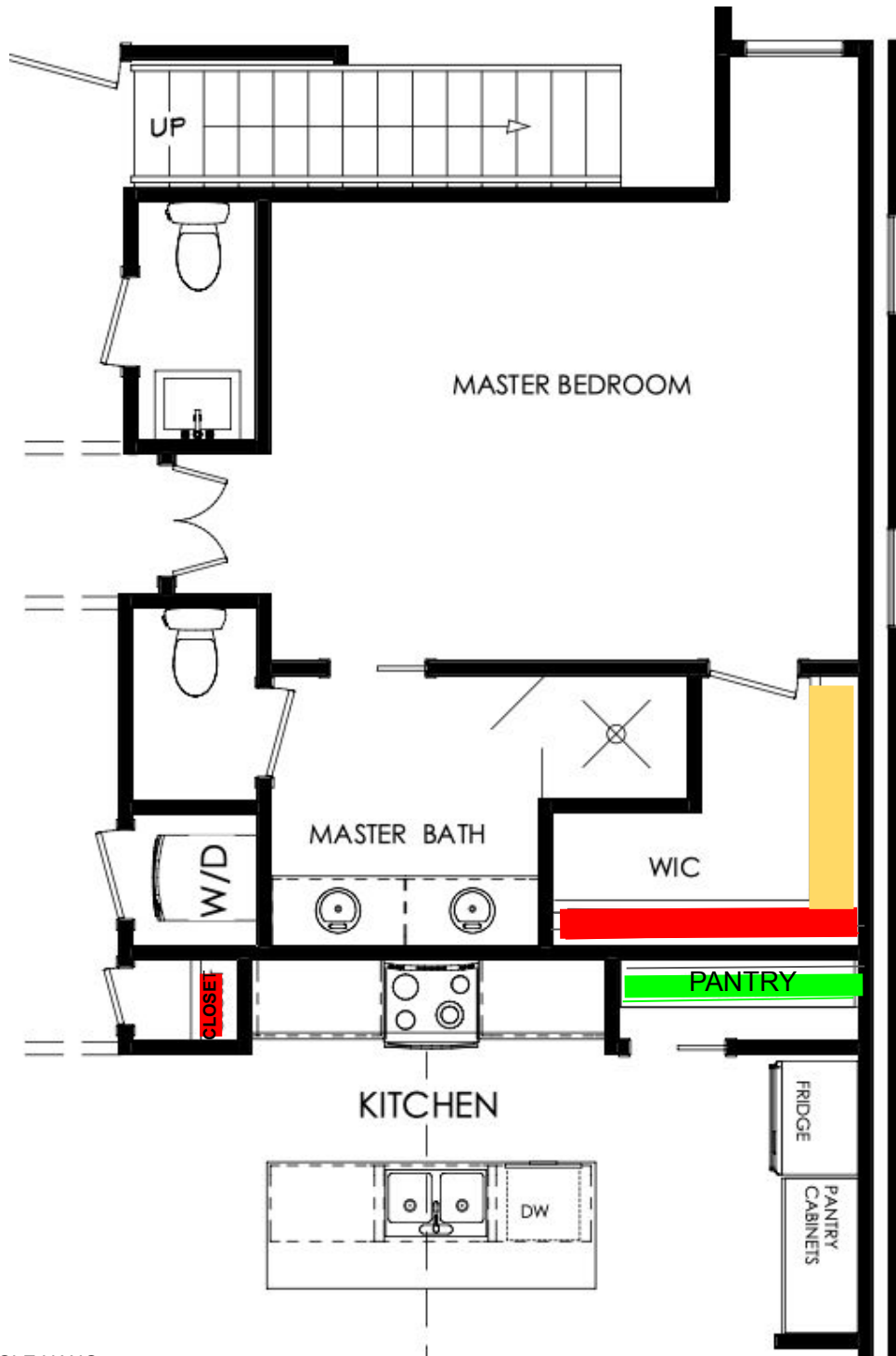
PEDESTALS SINKS INCLUDED

KOHLER - ARCHER

(SINGLE HOLE OPTION ONLY)



ADYN ON PARC-LENNOX



-SINGLE HANG



-TIGHT 4 ROW MESH



-DBL HANG



LIGHTING DETAILS	
AREA/ROOM	
EXTERIOR FRONT ENTRY	1- EXTERIOR LED FLUSHMOUNT (SWITCH: AT FRONT ENTRY)
FAMILY ROOM	4- LED FLUSH MOUNTS 3 WAY SWITCH AT FRONT ENTRY AND HALLWAY
DINING AREA	4- LED FLUSH MOUNTS SWITCH AT PANTRY SMALL WALL
GUEST BEDROOM	1- BLOCK, BRACE, WIRE FAN CENTER OF ROOM SWITCH AT ENTRY
KITCHEN	8- LED FLUSH MOUNT SWITCH ON COAT CLOSET WALL
KITCHEN RANGE SOFFIT	2- 4" CANS AT RANGE SWITCHED NEAR RANGE
KITCHEN UNDER COUNTER LIGHTS	N/A
KITCHEN BACKSPLASH	OUTLETS LOW AND SIDEWAYS AT COUNTER HEIGHT WHERE REQ
PANTRY	1- LED FLUSH MOUNT SWITCH INSIDE PANTRY
MAIN HALLWAY	5- LED FLUSH MOUNT 3WAY SWITCH AT BOTH ENDS
POWDER ROOM	1- VANITY LIGHT SWITCH AT ENTRY. FAN SWITCH AT ENTRY
MASTER BEDROOM	1- BLOCK, BRACE WIRE FAN CENTER OF ROOM SWITCH AT ENTRY. 4 LED FLUSH MOUNTS SWITCHED AT ENTRY
MASTER BATH	2- WALL MOUNT MOUNT VANITY LIGHT FIXTURES: SWITCH AT ENTRY. 1- STANDARD FAN LIGHT/BOX COMBO IN MASTER SHOWER; SWITCH SEPARATE AT ENTRY. 1 STANDARD FAN LIGHT/BOX COMBO IN TOILET ROOM. SWITCH AT ENTRY. SWITCH SEPARATE
MASTER BED CLOSET	2- LED FLUSH MOUNT LIGHT FIXTURES SWITCH AT ENTRY

ADYN ON PARC-LENNOX



STAIRWAY	2- LED FLUSH MOUNT TOP AND BOTTOM OF STAIR 3 WAY SWITCH AT TOP AND BOTTOM
2ND FLOOR HALLWAY	3- LED FLUSH MOUNTS SWITCH AT TOP OF STAIRS
LOFT AREA	4- LED FLUSH MOUNTS SWITCH AT TOP OF STAIRS
GUEST BEDROOM 2	1- BLOCK, BRACE AND WIRE FAN CENTER OF ROOM SWITCH AT ENTRY. FLUSH MOUNT FIXTURE STD.
GUEST BEDROOM 2 CLOSET	1- LED FLUSH MOUNTS SWITCH INSIDE CLOSET
GUEST BEDROOM 3	1- BLOCK, BRACE AND WIRE FAN CENTER OF ROOM SWITCH AT ENTRY. FLUSH MOUNT FIXTURE STD.
GUEST BATHROOM	2- VANITY LIGHT SWITCH AT ENTRY. 1 LED FLUSH MOUNT OVER SHOWER SWITCH AT ENTRY. BATH FAN SWITCH AT ENTRY
ATTIC MECHANICAL ROOM	2- LED FLUSH MOUNT SWITCH AT ENTRY
ATTIC FURNACE AREA UNFINISHED	1- LED FLUSH MOUNT SWITCH AT ENTRY
GARAGE	2- LED FLUSH MOUNT SWITCH AT ENTRY
EXTERIOR GARAGE	1- DUSK TO DAWN WALL MOUNT LIGHT ABOVE GARAGE DOOR. NO SWITCH
LOW-VOLTAGE - LIVING ROOM	1- CAT5 E AND COAX ABOVE FIREPLACE 5' HIGH STANDARD. SMART TUBE RUN TO SIDE OF FIREPLACE
MASTER BEDROOM	1- CAT5 E AND COAX LOW ON T.V WALL
GUEST BATHROOM 2	1- CAT5 E AND COAX LOW ON T.V WALL
GUEST BATHROOM 3	1- CAT5 E AND COAX LOW ON T.V WALL

ADYN ON PARC-LENNOX



LOCKOUT-INCLUDED

FRONT ENTRY DOOR

SATIN NICKEL FINISH



STYLE ONLY, NOT FINISH COLOR

OTHER DOORS

SATIN NICKEL FINISH



STYLE ONLY, NOT FINISH COLOR

ADYN ON PARC-LENNOX



LOCKOUT OPTION

AVAILABLE OPTION

FRONT ENTRY DOOR KEYPAD

SATIN NICKEL FINISH



GARAGE DOOR KEYPAD





GARAGE

GARAGE DOOR - SKYLINE FLUSH



Skyline Flush



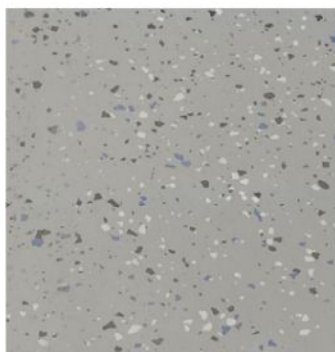
AVAILABLE OPTIONS

GARAGE DOOR GLASS



GARAGE FLOOR EPOXY

GRAY



TAN

